

# 12"

# SUPERIOR 1200

## AT A GLANCE



**SIZE**  
381 - 660mm  
(15" - 19 1/4")



**SHANK**  
DHD 112

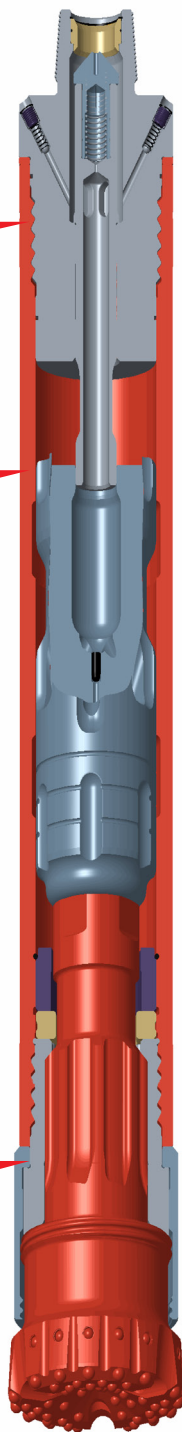


**AIR PRESSURE**  
100 - 435psi  
(7 - 30 bar)

Variable bypass porting has been added to the top adaptor

A variable live air bleed to allow greater additives to increase up-hole velocity.

The Bit Catcher System has a specially designed chuck and drill bit arrangement.



## SUPERIOR 1200

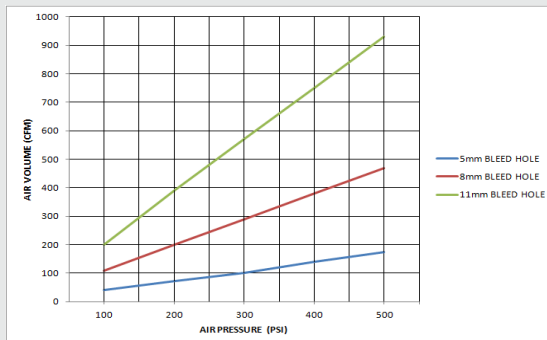
The Superior 1200 incorporates a unique piston design for high performance and reliability especially in Oil & Gas applications.

This hammer is suitable for a wide range of air pressures. Its optimum performance is reached at air pressures of 200psi (14 bar) and above.

Standard design features include a jetted back head, a variable air bleed piston and a bit catcher system to ensure your bits are not lost down the hole and diamond enhanced inserts.

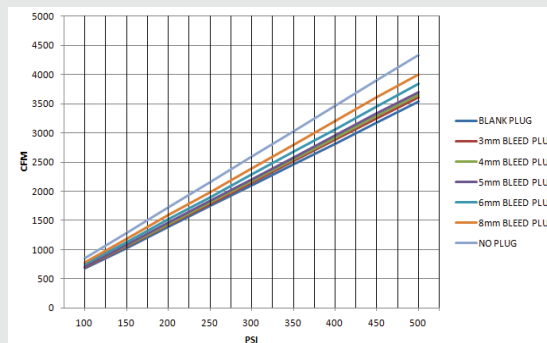
### Air Consumption

#### Bypass Top Adaptor



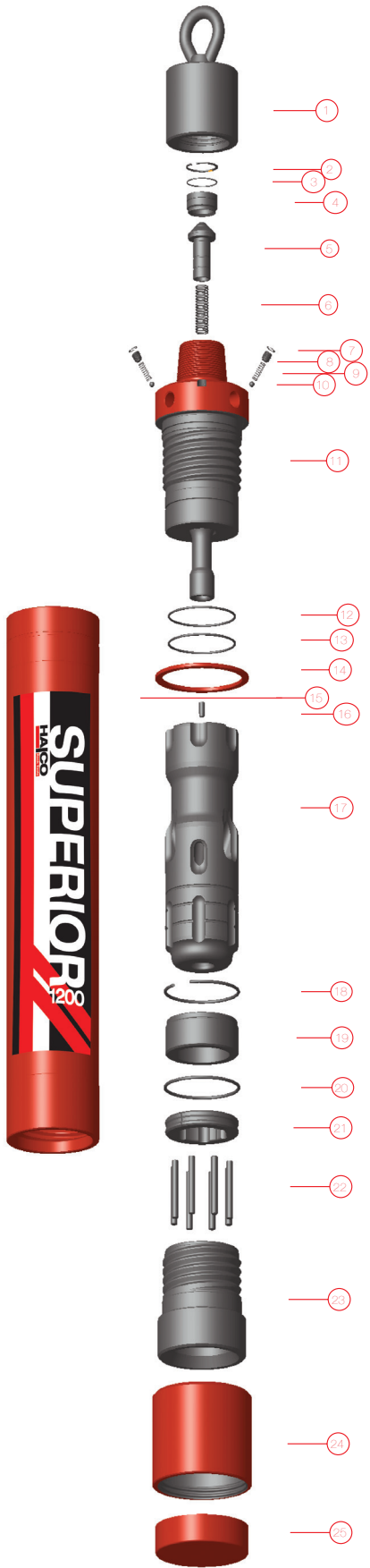
Note: The air volumes quoted above are based upon one bleed plug.

### Hammer



Figures are based on theoretical data.

**UNITED KINGDOM**  
Halco Rock Tools Limited  
Armytage Road, Brighouse  
West Yorkshire  
Tel: +44 (0)1422 399900  
[www.halcorocktools.com](http://www.halcorocktools.com)



## Hammer Overview

Hammer Type	Superior 1200
Shank	DHD 112
Top Thread	6 5/8" API Reg Pin
Flat Hammer Size	273mm (10.748")
Weight	614 Kg
Outside Diameter	273mm (10.748")
Make Up Length	1684mm (49.724")
Recommended Minimum Thrust	1600 Kg (3520 lbs)
Recommended Maximum Thrust	3500 Kg (7700 lbs)

## Parts List

		Maintenance Kits		
		Service Kit SK93	Repair Kit RK150	Life Kit LK14
Shank		DHD 112		
Model No.		600435		
Item	Description	Service Kit SK93	Repair Kit RK150	Life Kit LK14
1	Lifting Cap	-	-	-
2	Circlip	-	1	-
3	O'Ring	2	2	-
4	N.R.V. Seat	-	1	-
5	N.R.V.	-	1	-
6	N.R.V. Spring	-	1	-
7	Circlip	-	4	-
8	Bleed Plugs	-	4	-
9	Spring	-	4	-
10	Ball Bearing	-	4	-
11	Top Adaptor	-	-	1
12	O'Ring	-	1	-
13	O'Ring	2	2	-
14	Spacer	2	2	-
15	Cylinder	-	-	1
16	Bleed Plug	1	1	-
17	Piston	-	-	1
18	Snap Ring	-	1	-
19	Guide Bush	-	-	-
20	O'Ring	2	2	-
21	Bit Retaining Ring	-	1	-
22	Drive Pins	-	8	-
23	Chuck	-	1	-
24	Shroud	-	-	-
25	End Cap	-	-	-

## Drill Bits

Part Number	Diameter mm	Face Inch	Face Design	Face Type	Buttons Qty / Dia	Over Size	Weight (Kg)
<b>DHD112</b>							
653518	311	12 1/4	Concave	Diamond Gauge	51x 18mm / 15 x 22.2mm wear		185
653511	311	12 1/4	Concave	Diamond	51x 18mm / 15x 22.2mm wear		185
653506	314	12 3/8	Concave	Diamond	51x 18mm / 15x 22.2mm wear	Y	190
653547	314	12 3/8	Convex	Diamond	59x 18mm inc. wear	Y	190
653550	314	12 3/8	Convex	Diamond	35x 18mm / 24x 18mm wear	Y	190
653508	444	17 1/2	Concave	Diamond	33x 18mm / 48x 22.2mm wear	Y	265
653535	444	17 1/2	Concave	Diamond	33x 18mm / 48x 22.2mm wear	Y	265
653552	444	17 1/2	Concave	Carbide	33x 18mm / 48x 22.2mm wear	Y	265

Additional drill bit configurations are available upon request.

